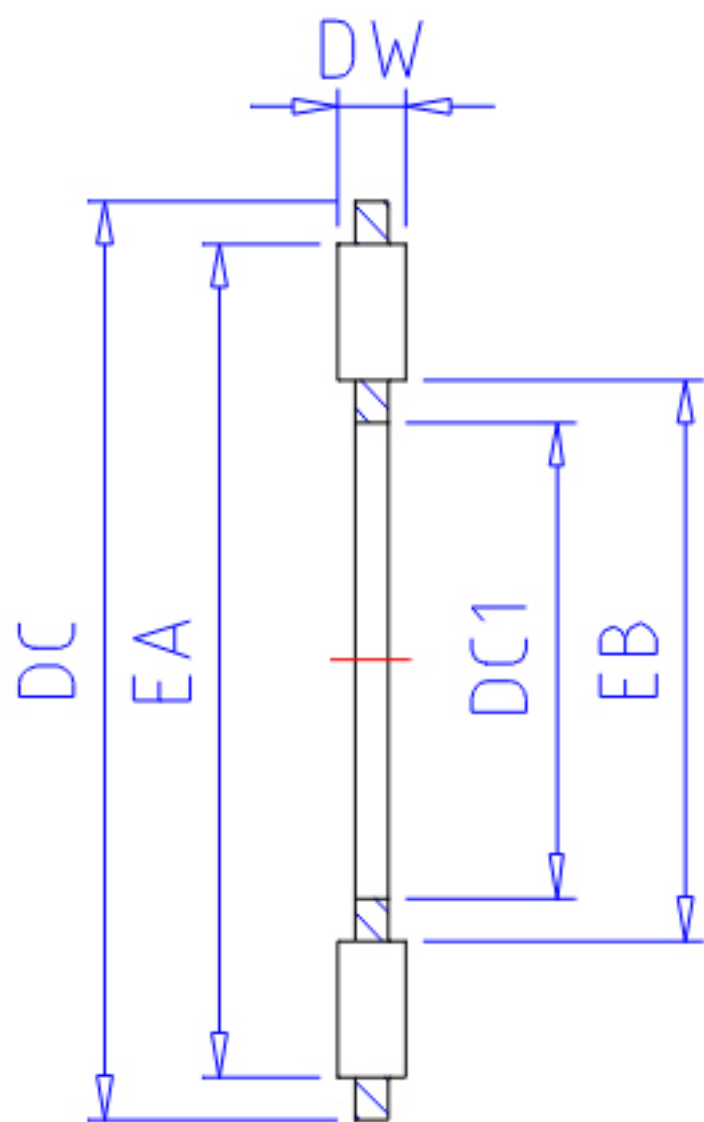


NTN K81215T2参数

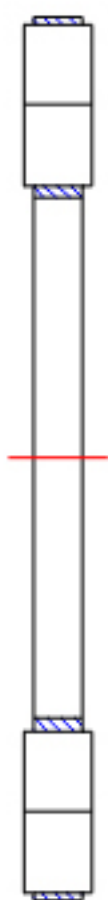
型号	ORDER	K81215T2		型号
尺寸	DC1	75	mm	-
	DC	110	mm	-
	DW	11.0	mm	-
	EB	80.1	mm	-
	EA	103.7	mm	-
基本额定载荷	CA	138000	N	动载荷
	COA	435000	N	静载荷
	CAF	14100	kgf	动载荷
	COAF	44500	kgf	静载荷
极限转速	LSG	650	r/min	脂润滑
	LSO	2600	r/min	油润滑
重量	MASS	240	g	重量

NTN K81215T2图片

参考资料:<http://www.sozhou.com/p/6fe7da4f.html>



K811, K812...



K893...